

Kiwi Pi

ARM Mini PC Box M2

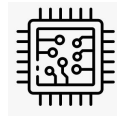
RK3588S CPU with 8K 60fps display



Shenzhen Tianyue Zhichuang Technology Co., Ltd.

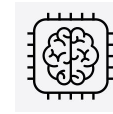
www.kiwi-pi.com

Product features



AIOT chipset RK3588S

Octa-core 64-bit processor, frequency up to 2.4GHz
Quad-core Cortex A76 and quad-core Cortex A55



6Tops NPU

AI accelerator NPU offers 6Tops computing power
and supports mainstream deep learning frameworks



Large Memory

Large RAM 8GB and large ROM 128GB
Expandable to RAM 32GB and ROM 512GB



Dual Display Output

HDMI 2.1 (8K@60fps) and DP1.4 video output
port (HDMI2.1 (8K) +DP1.4 (4K))



Multiple System

Android 13.0 Ubuntu22.04 / Debian11 / Buildroot
are supported.



Strong Network

1000M Ethernet & WiFi6(802.11ax) & BT5.0
enabling higher-speed network communication

Specifications

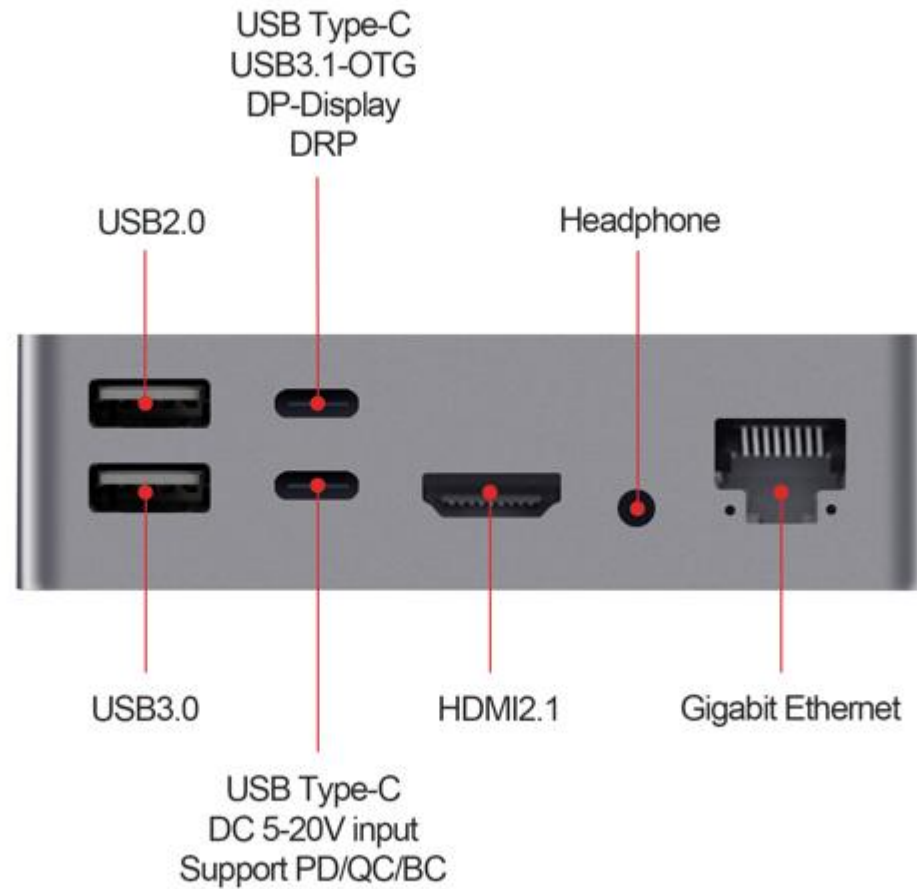


RK3588 SoC	CPU	8 ARM-64bit cores; big.LITTLE CPU architecture; 4x Cortex-A76(max frequency 2.2GHz-2.4GHz) + 4x Cortex-A55(max frequency 1.8GHz)
	GPU	ARM Mali-G610 MC4 (max freq 1GHz) Support OpenCL 3.0; OpenGL ES 1.1/2.0/3.2; Vulkan 1.1; Embedded high performance 2D image acceleration module
	NPU	6TOPS(INT8) Support INT4/INT8/INT16/FP16
	VPU	Video Decoder: 8K@30fps H.264; 8K@60fps VP9、H.265、MVC、AVS2; 4K@60fps AV1; 1080p@60fps MPEG-2、MPEG-1、VC-1、VP8; Video Encoder: 8K@30fps H.265/H.264
	ISP	VICAP input: RX raw8/raw10/raw12 Maximum input: 48M: 8064x6048@15fps dual ISP; 32M: 6528x4898@30fps dual ISP; 16M: 4672x3504@30fps single ISP
	Process	8nm
RAM	LPDDR4X	8GB(Default), 16/32GB(Option)
Memory	eMMC5.1	128GB(Default), 64/256/512GB(Option), expansion for M.2 2280 PCIE NVME
Panel	Display	3.16 inch IPS LCD, 820 x 120 resolution
	Power Key	Devices power ON/OFF with red/green LED indicator

Specifications

I/O Interface	HDMI	HDMI2.1 8K@60Hz, support ARC
	USB-C for Data	USB3.0 OTG data transfer; DisplayPort ALT mode; Power Delivery; Dual-role power
	USB-C for Power supply	Devices power supply, support PD/QC, DC-12V default
	USB-A USB3.0	USB3.0 HOST
	USB-A USB2.0	USB2.0 HOST
	RJ45	10/100/1000M Ethernet
	3.5mm Audio Jack	Support stereo audio output and MIC input
Function	RTC	Real time clock
	Wi-Fi(Optional)	IEEE802.11 a/b/g/n/ac 2.4/5GHz Dual-Band 1x1 Wi-Fi
	BT(Optional)	Bluetooth V5.0 + EDR with BLE
	Speaker(Optional)	4Ω/2W Left/Right Speaker
	IMU(Optional)	3-axis accelerometer and 3-axis gyroscope
Operating System	Android	Android 12(Default) Android 11/13/14(Optional)
	Linux	Ubuntu22.04 / Debian11 / Buildroot
	Domestic OS	UOS / KylinOS / HarmonyOS
Power Supply	USB-C	USB-C Adapter,default 12V/1.67A(20W)
Power Consumption	Typical	2.16W (12V/180mA)
	Maximum	14.4W (12V/1200mA)
	Standby	0.06W (12V/5mA)
Mechanical	Chassis Material	Aluminum Alloy Integrated Profile
	Color	Dark grey default, silver, black or white etc.
	Mounting	Desktop stand or monitor rear hanging
Size	Dimensions	95 x 95 x 26mm
	Weight	0.66lb
Ambient	Operating Temperature	-0°C ~ 60°C
	Storage Temperature	-20°C ~ 70°C
	Operating Humidity	10% ~ 90% (Non condensation)

Interface description



Dimension

